

PART OF THE N.W. 1/4, SEC. 29, T.7N., R.1W., S.L.B. & M.
NORTH OGDEN ESTATES

184

IN NORTH OGDEN CITY

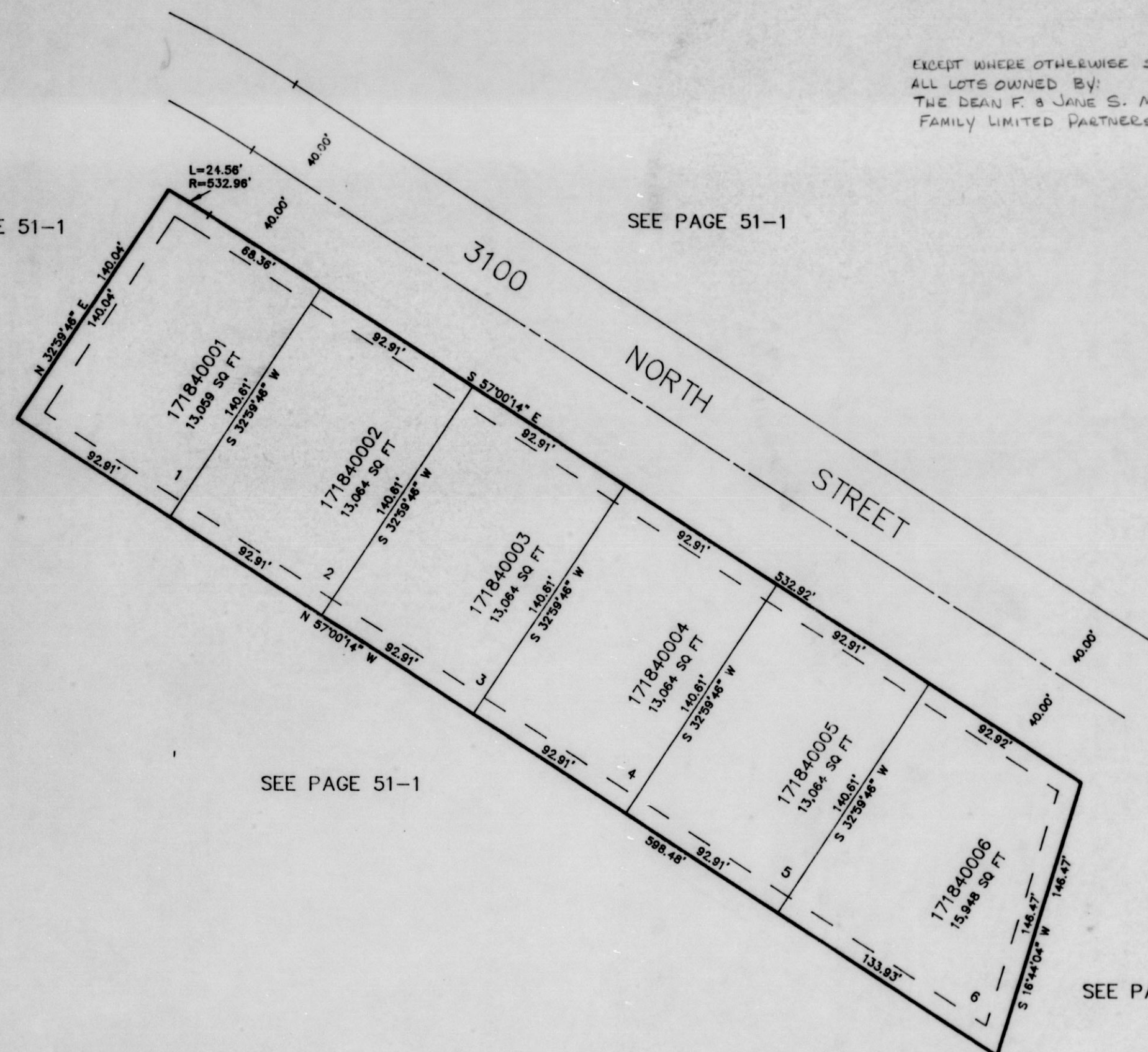
SCALE 1" = 50'

TAXING UNIT: 10

EXCEPT WHERE OTHERWISE SHOWN
 ALL LOTS OWNED BY:
 THE DEAN F. & JANE S. MOERIN
 FAMILY LIMITED PARTNERSHIP

SEE PAGE 51-1

SEE PAGE 51-1



SEE PAGE 51-1

SEE PAGE 51-1

10' UTILITY & DRAINAGE EASEMENTS EACH
 SIDE OF PROPERTY LINES AS INDICATED
 BY DASHED LINES EXCEPT AS OTHERWISE
 SHOWN.

FOR COMPLETE ENG DATA SEE
 ORIGINAL DEDICATION PLAT IN
 BOOK 34, PAGE 78 OF RECORDS.